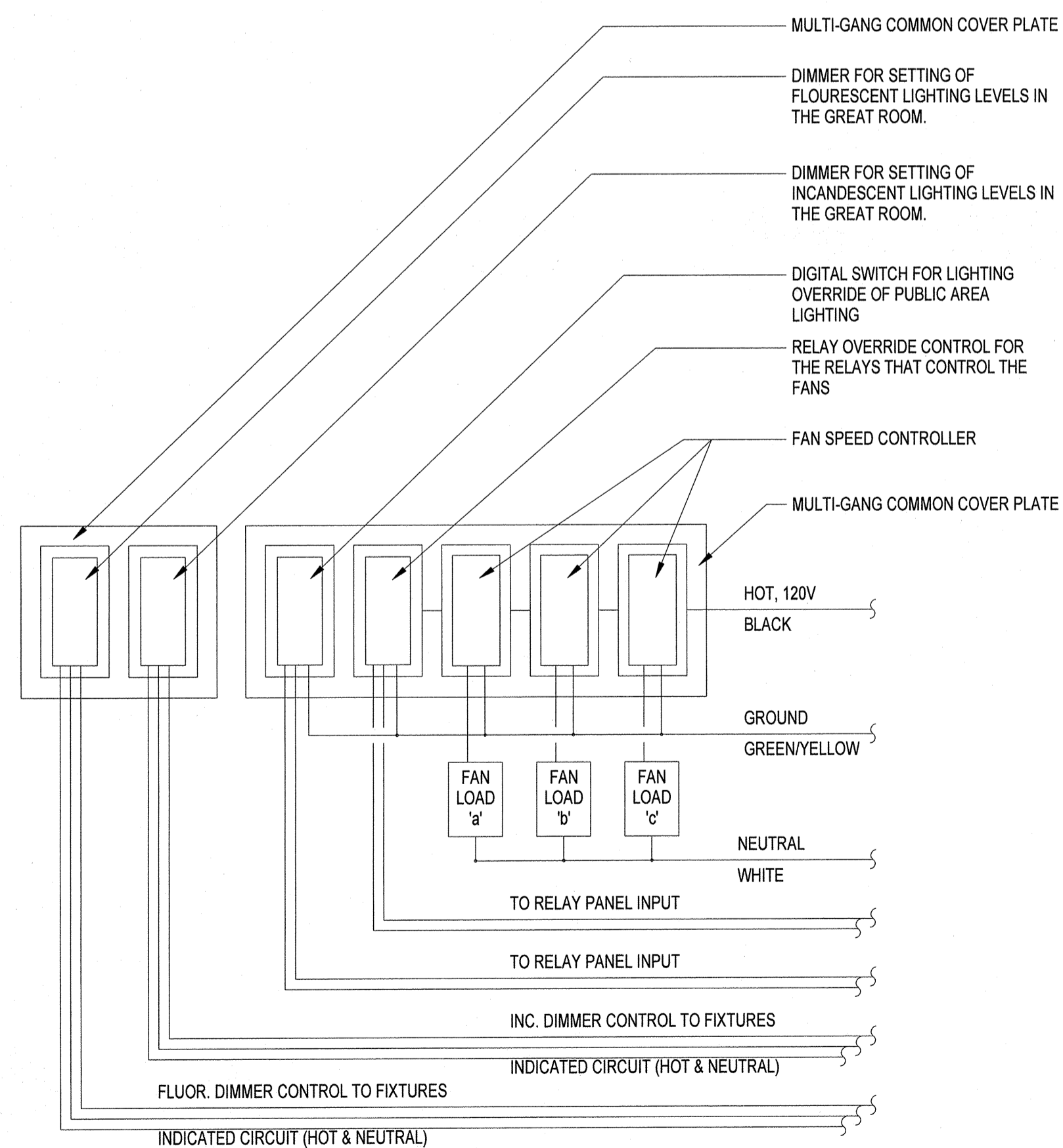
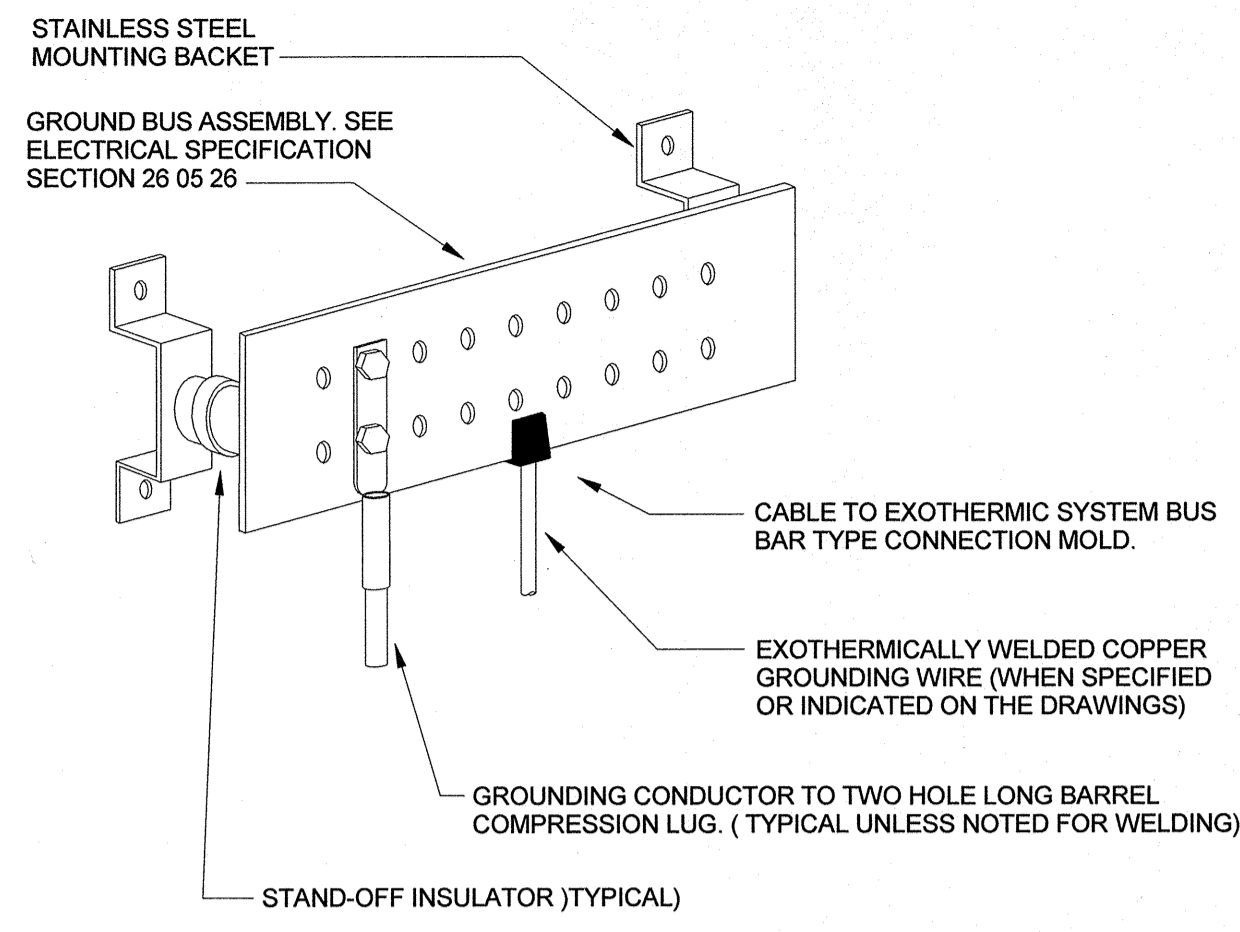


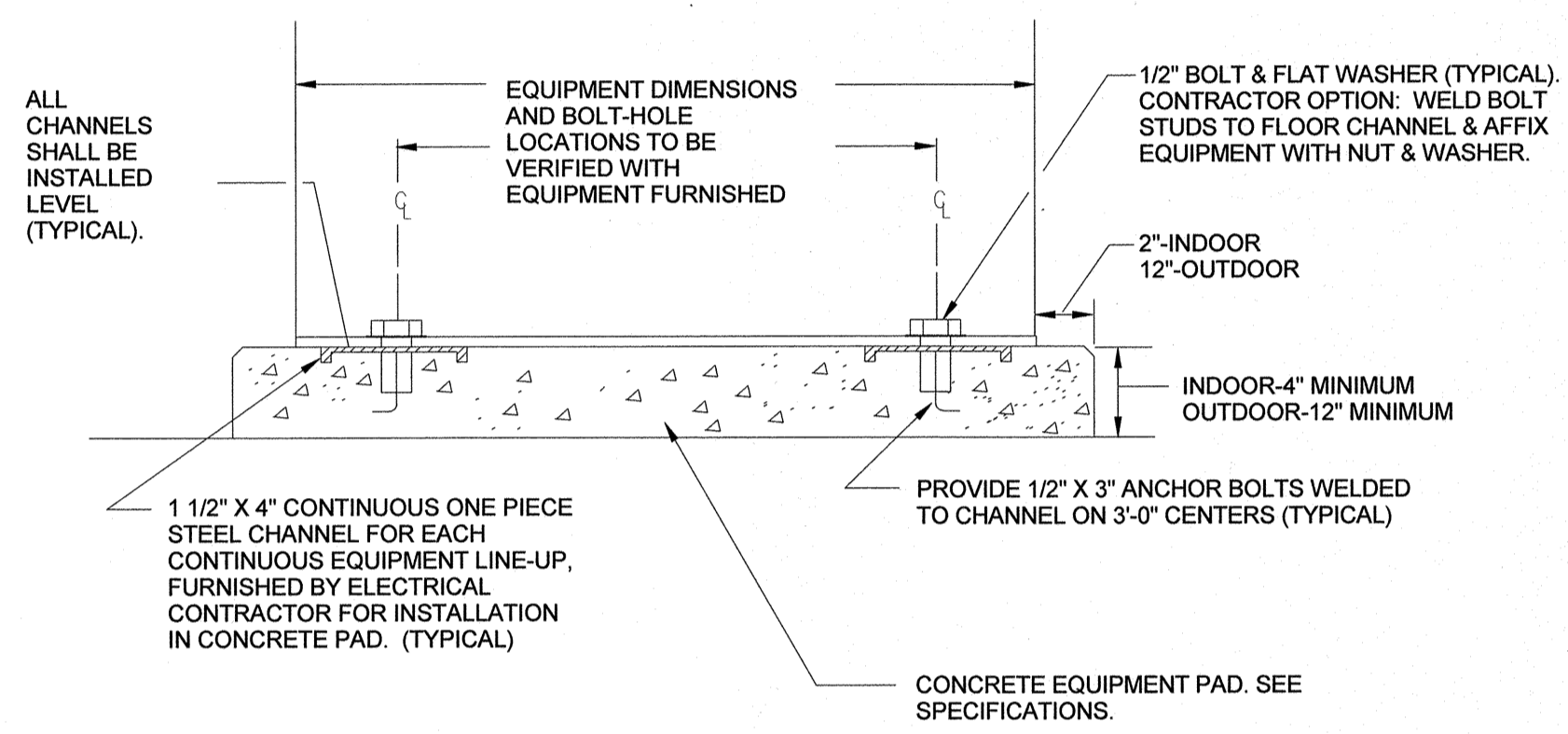
07 ELECTRICAL GROUNDING SCHEMATIC
 NO SCALE



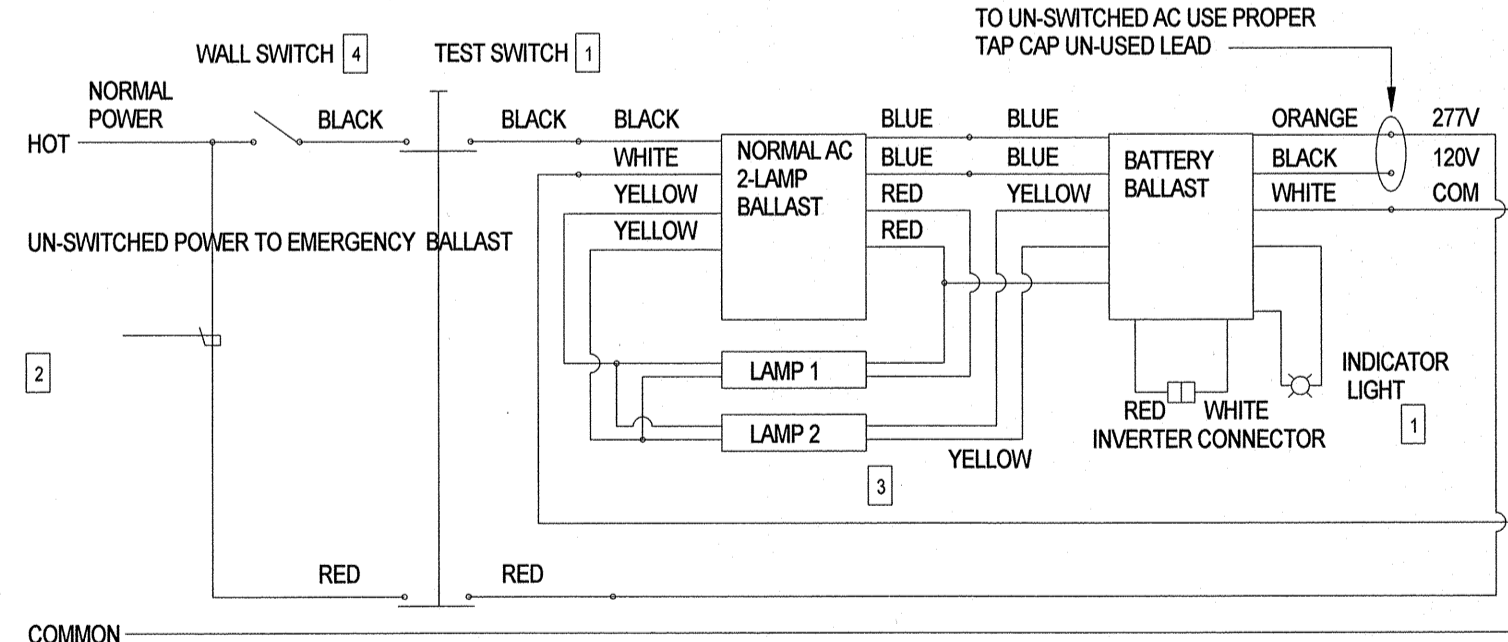
06 GREAT ROOM SWITCH GROUP SCHEMATIC
 NOT TO SCALE



05 GROUNDING BUS DETAIL
 SCALE: NOT TO SCALE

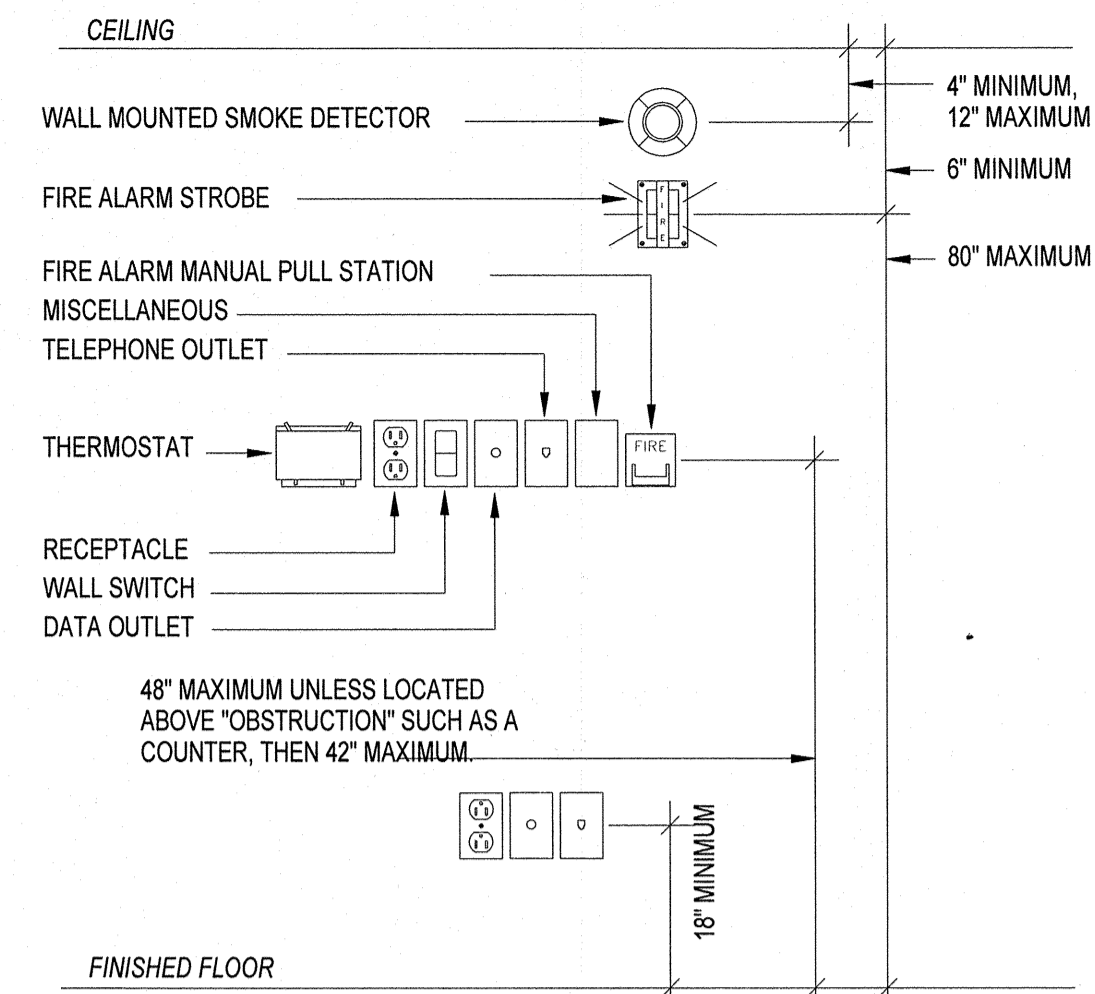


04 EQUIPMENT ANCHOR DETAIL
 SCALE: NOT TO SCALE



TYPICAL EMERGENCY BALLAST WIRING DIAGRAM
 SWITCHED LAMPS (LIGHT FIXTURE), UNSWITCHED EMERGENCY BALLAST
 (DIAGRAM FOR 2-LAMP EMERGENCY OPERATION, DIAGRAM FOR 1-LAMP EMERGENCY OPERATION SIMILAR. NORMAL BALLAST IS 2-LAMP RAPID START TYPE, SIMILAR WIRING DIAGRAM FOR OTHER TYPE OF BALLASTS).
 NOTES:
 1. INSTALL TEST SWITCH AND CHARGING INDICATING LIGHT PER INSTALLATION INSTRUCTIONS.
 2. CONNECT EMERGENCY BALLAST TO UN-SWITCHED POWER LEADS.
 3. LAMPS ARE SWITCHED ON AND OFF BY WALL SWITCH. WHEN NORMAL POWER FAILS, THE EMERGENCY BALLAST AUTOMATICALLY SWITCHES TO EMERGENCY POWER, OPERATING BOTH LAMPS FOR AT LEAST 90 MINUTES.
 4. FOR UNSWITCHED (EGRESS) EMERGENCY BALLAST FIXTURES, WIRING DIAGRAM IS SIMILAR EXCEPT NO WALL SWITCH.

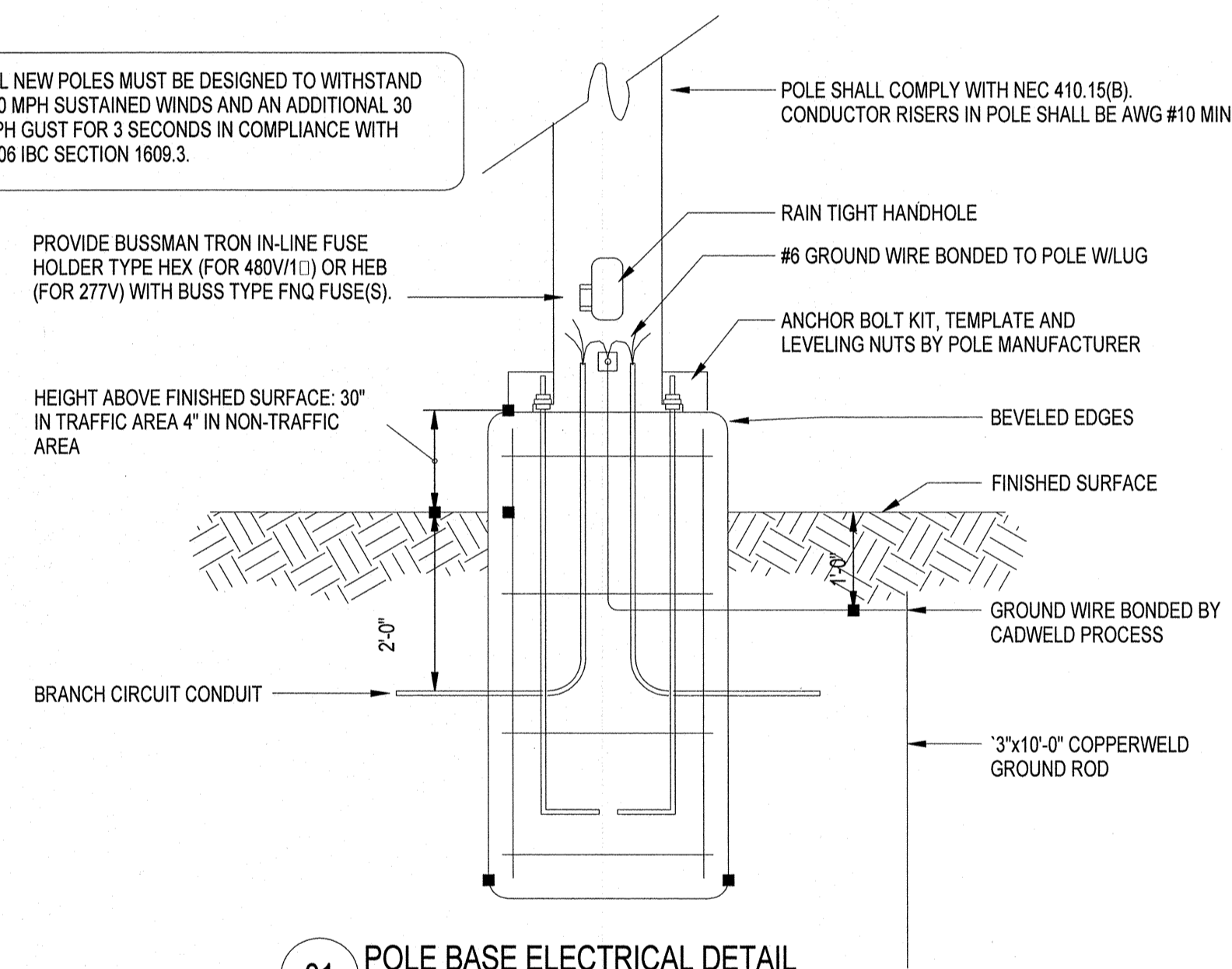
03 TYPICAL EMERGENCY BALLAST WIRING DIAGRAM
 SCALE: NO SCALE



02 MOUNTING HEIGHT DETAIL
 SCALE: NOT TO SCALE

NOTE: ALL DEVICES SHOWN MAY NOT BE USED. DETAIL INDICATES TYPICAL MOUNTING HEIGHTS ONLY. MOUNTING HEIGHTS SHOWN ON THE ARCHITECT DRAWINGS AND SPECIFICATIONS TAKE PRECEDENCE. VERIFY EXACT MOUNTING HEIGHT REQUIRED WITH ARCHITECT AND INSTALL ACCORDINGLY.

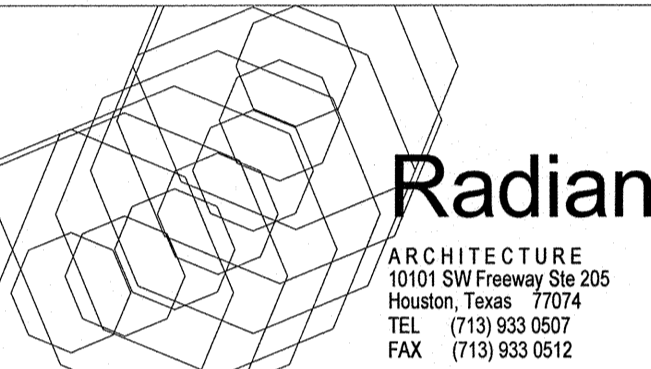
ALL NEW POLES MUST BE DESIGNED TO WITHSTAND 110 MPH SUSTAINED WINDS AND AN ADDITIONAL 30 MPH GUST FOR 3 SECONDS IN COMPLIANCE WITH 2006 IBC SECTION 1609.3.



01 POLE BASE ELECTRICAL DETAIL
 SCALE: NOT TO SCALE

REFER TO ARCHITECTURAL DRAWINGS FOR ADDITIONAL PHASING INFORMATION.

OPTIMUM CARE
 SUGAR LAND, TEXAS



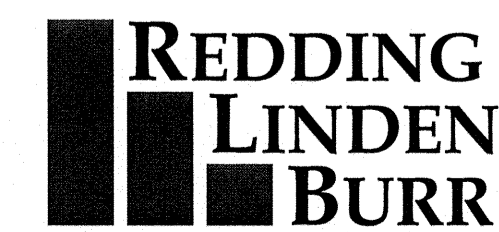
Revision Schedule		
#	Date	Description

Project No.

ELECTRICAL DETAILS

Sheet No.

E4.02



CONSULTING ENGINEERS
 801 TRAVIS, SUITE 2000
 HOUSTON, TEXAS 77002
 PH: 713.237.9800
 FAX: 713.237.9801

