

LUMINAIRE SCHEDULE

TYPE	MANUFACTURER	DESCRIPTION	MOUNTING	LAMPING	WATTAGE	VOLTS	REMARKS
A	CON-TECH LIGHTING : CTL804L2VS-35N-P	LED TRACK HEAD	SURFACE	INTEGRATED LED	18 W	120	1,2
AE	CON-TECH LIGHTING : CTL804L2VS-35N-P	LED TRACK HEAD w/ 90 MIN EMERGENCY BATTERY BACKUP	SURFACE	INTEGRATED LED	18 W	120	1,2
B	LITHONIA : 6BPMW HLED 30K90CRI	6" LED DOWNLIGHT	RECESSED	INTEGRATED LED	18 W	120	1,2
BE	LITHONIA : 6BPMW HLED 30K90CRI EL14L	6" LED DOWNLIGHT w/ 90 MIN 1400 LUMEN BATTERY BACKUP	RECESSED	INTEGRATED LED	18 W	120	1,2
C	LITHONIA : LBL4 60L MVOLT EOHN LP830	1' X 4' LINEAR LED FIXTURE	SURFACE	INTEGRATED LED	64 W	120	1,2
CE	LITHONIA : LBL4 60L MVOLT EOHN LP830 EL14L	1' X 4' LINEAR LED FIXTURE w/ 90 MIN 1400 LUMEN BATTERY BACKUP	SURFACE	INTEGRATED LED	64 W	120	1,2
D	LITHONIA : 2VTLX4 72L ADP MVOLT LP830	2' X 4' LINEAR LED FIXTURE	RECESSED	INTEGRATED LED	96 W	120	1,2
DE	LITHONIA : 2VTLX4 72L ADP MVOLT LP830 EL14L	2' X 4' LINEAR LED FIXTURE w/ 90 MIN 1400 LUMEN BATTERY BACKUP	RECESSED	INTEGRATED LED	96 W	120	1,2
F	VISA LIGHTING : MERIDIAN CP5702 L30K	3" DIAMETER LED PENDANT FIXTURE	PENDANT	INTEGRATED LED	100 W	120	1,3
G	MODERN FORMS : WS-3226	BATHROOM VANITY FIXTURE	SURFACE	INTEGRATED LED	64 W	120	1,2
J	DUAL LITE : PG-W	EXTERIOR NORMAL-OFF EMERGENCY FIXTURE	SURFACE	INTEGRATED LED	64 W	120	1
K	LITHONIA : OLWX1 LED 40W 40K DDB	EXTERIOR WALL PACK	SURFACE	INTEGRATED LED	70 W	120	1,2
M	LITHONIA : C132 MVOLT GEB10RS	4' FLUORESCENT STRIP FIXTURE WITH WIRE GUARD	SURFACE	T8 FLOURESCENT	40 W	120	1
N	TBD	GENERATOR LIGHT: FIXTURE & MOUNTING MATCHES FIXTURE USED FOR GENERATOR #1	SURFACE	INTEGRATED LED	96 W	120	1
X1	TBD	SINGLE FACED EXIT SIGN w/ EMERGENCY LIGHT	SURFACE	INTEGRATED LED	3 W	120	1
X2	TBD	TWO SIDED EXIT SIGN	SURFACE	INTEGRATED LED	3 W	120	1

REMARKS:
 1. FINAL SELECTION OF FIXTURE SHALL BE APPROVED BY OWNER/ARCHITECT PRIOR TO PURCHASE.
 2. LED COLOR TEMPERATURE SHALL BE 3000K FOR THESE FIXTURE.
 3. LED COLOR TEMPERATURE SHALL BE 3500K FOR THESE FIXTURE.

KEYED NOTES

1. CIRCUIT SHALL BE ROUTED THROUGH RELAY PANEL "RP-4". PRIMARY CONTROL SHALL BE SWITCHED VIA PHOTO CELL. SECONDARY CONTROL SHALL BE SWITCHED BY A TIME CLOCK. MOUNT PHOTOCCELL ON ROOF. COORDINATE SCHEDULE WITH OWNER.
2. EXHAUST FAN SHALL BE SWITCHED WITH LIGHTS.
3. CONTRACTOR SHALL SERVE FIXTURE FROM UNSWITCHED PORTION OF THE LIGHTING CIRCUIT IN THIS AREA.
4. KITCHEN FOOD PREPARATION AREA LIGHTING REQUIREMENT. PROVIDE AT LEAST 50 FOOT-CANDLES OF LIGHT TO ALL WORKING SURFACES
5. FOOD STORAGE AREA LIGHTING REQUIREMENT. PROVIDE AT LEAST 10 FOOT-CANDLES AT A DISTANCE OF 30 INCHES ABOVE THE FLOOR IN WALK-IN REFRIGERATION UNITS AND DRY FOOD STORAGE AREAS.
6. CONTRACTOR SHALL PROVIDE AND INSTALL THREE(3) WALL MOUNTED FAN SPEED CONTROLLERS (LUTRON NTF5-6E-XX OR SIMILAR - XX DENOTES COLOR). ONE(1) CONTROLLER AND SWITCH LEG SHALL BE INSTALLED PER FAN.
7. LIGHTING CONTROLS NOT REQUIRED IN THIS AREA FOR SAFETY PER 2015 IECC AUTOMATIC.

LIGHTING COMMISSIONING NOTES

A COMMISSIONING PLAN MUST BE DEVELOPED BY A REGISTERED DESIGN PROFESSIONAL OR APPROVED AGENCY. THE PLAN SHALL INCLUDE THE FOLLOWING ITEMS:

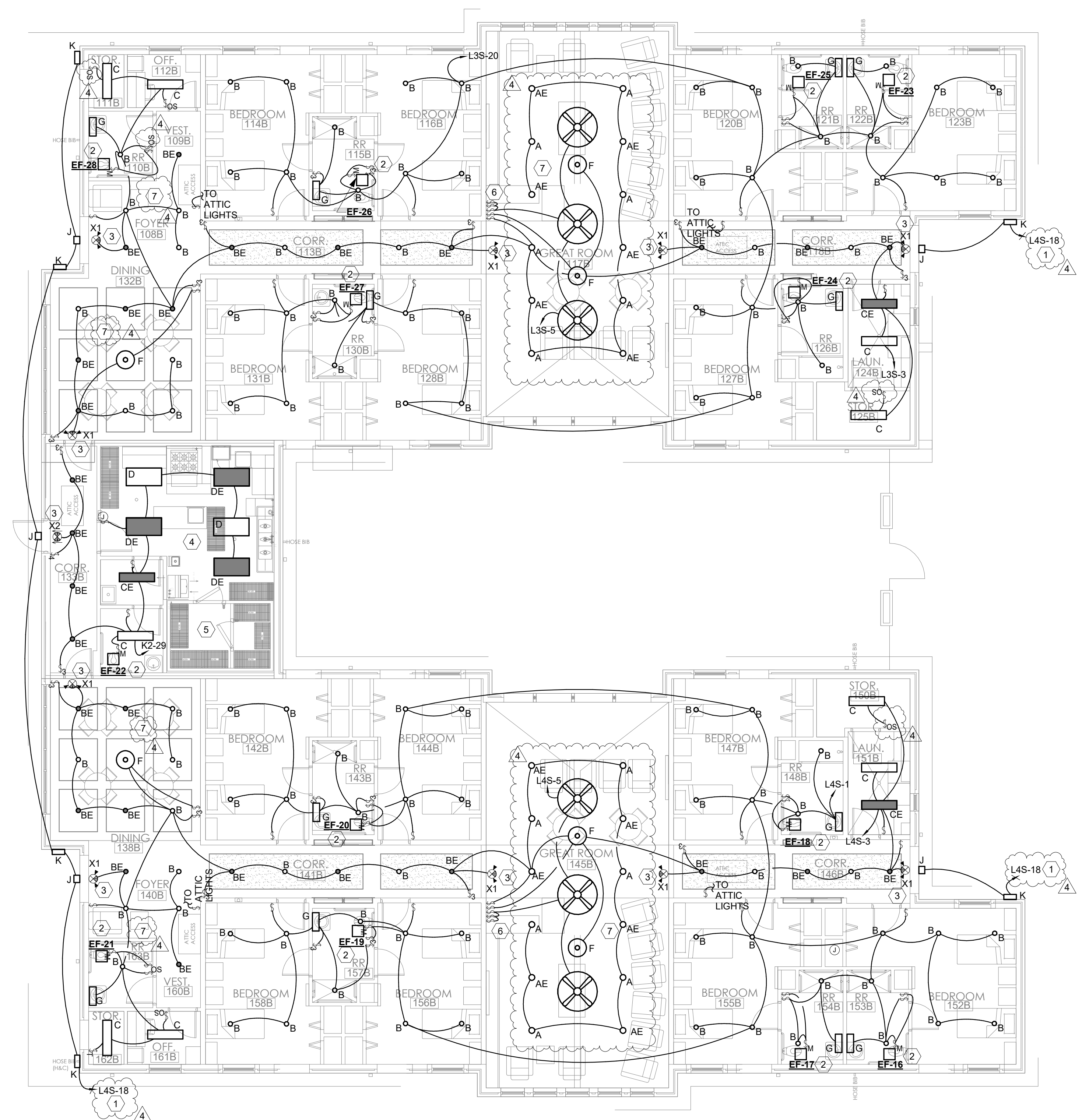
- A NARRATIVE DESCRIPTION OF THE ACTIVITIES THAT WILL BE ACCOMPLISHED DURING EACH PHASE OF COMMISSIONING.
- A LISTING OF THE SPECIFIC EQUIPMENT, APPLIANCES OR SYSTEMS TO BE TESTED AND A DESCRIPTION OF THE TESTS TO BE PERFORMED.
- FUNCTIONS TO BE TESTED.
- CONDITIONS UNDER WHICH THE TEST WILL BE PERFORMED.
- MEASURABLE CRITERIA FOR PERFORMANCE

CONTRACTOR SHALL BE RESPONSIBLE FOR THE DEVELOPMENT AND IMPLEMENTATION OF THE COMMISSIONING PLAN.

- LIGHTING SYSTEM COMMISSIONING ACTIVITIES INCLUDE BUT SHALL NOT BE LIMITED TO:
 - SUBMITTAL REVIEWS
 - FIELD OBSERVATION
 - ENSURE ALL FIXTURES HAVE LAMPS AND ARE OPERATIONAL
 - TEST EMERGENCY LIGHTING (INCLUDING EXIT SIGNS)
 - ENSURE ALL OCCUPANCY & DAYLIGHT SENSORS HAVE BEEN INSTALLED PER THE MANUFACTURERS INSTRUCTIONS OPERATING AS INTENDED.
- AND ARE
 - VERIFY STATUS INDICATORS ON DEVICES ARE CORRECT.
 - CONFIRM SWITCHES AND DEVICES CONTROL LIGHT FIXTURES AS INDICATED ON THE DRAWINGS.
- THE LIST OF COMMISSIONED SYSTEMS INCLUDES, BUT SHALL NOT BE LIMITED TO:
 - LIGHT FIXTURES
 - EXIT SIGNS
 - EMERGENCY EGRESS LIGHTING
 - OCCUPANCY SENSORS
 - DAYLIGHT SENSORS
 - TIME-CLOCK & TIME-SWITCH CONTROLS
 - DIMMER SYSTEMS
 - BAS INTERFACE
- DOCUMENTATION CERTIFYING THE INSTALLED LIGHTING CONTROLS MEET DOCUMENTED PERFORMANCE CRITERIA OF SECTION C405 OF THE 2015 IECC ARE TO BE PROVIDED TO THE BUILDING OWNER WITHIN 90 DAYS OF THE RECEIPT OF THE CERTIFICATE OF OCCUPANCY.

2 IECC 2015
N.T.S.

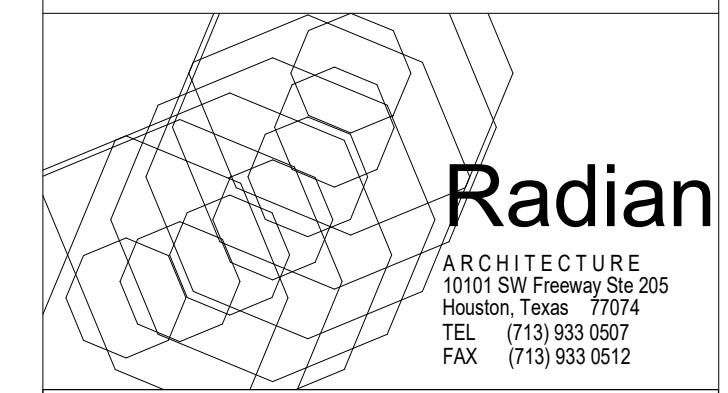
REFER TO ARCHITECTURAL DRAWINGS FOR ADDITIONAL PHASING INFORMATION.



1 ELECTRICAL LIGHTING PLAN - AREA B
1/8" = 1'-0"



OPTIMUM CARE
SUGAR LAND, TEXAS



Revision Schedule		
#	Date	Description
3	09-04-15	PERMIT REVISIONS
4	10-26-18	ELECTRICAL REVISION



Project No.
ELECTRICAL LIGHTING PLAN - AREA B

Sheet No.
E2.02

KCI TECHNOLOGIES
 ENGINEERS
 PLANNERS
 SCIENTISTS
 CONSTRUCTION MANAGERS
 801 TRAVIS, SUITE 2000
 HOUSTON, TX 77002
 PHONE: 713-237-9800
 FAX: 713-237-9801
 Texas Registered Engineering Firm F-10573