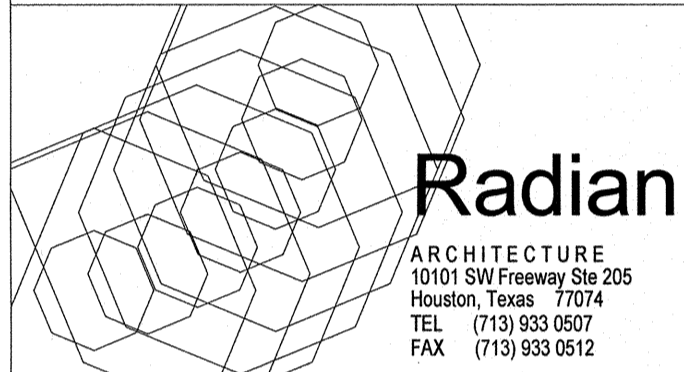


KEYED NOTES

- 1 SWITCHED LIGHTING FIXTURE WITH BATTERY PACK, TO BE SERVED FROM CIRCUIT SERVING THIS AREA, TO BE SWITCHED WITH OTHER LIGHTING FIXTURES IN THE PATTERN (TYPICAL). REFER TO DETAIL 03/E4.02.
- 2 UNSWITCHED LIGHTING FIXTURE WITH BATTERY PACK, TO BE SERVED FROM UNSWITCHED CIRCUIT SERVING LIGHTING THIS AREA (TYPICAL). FIXTURE IS SWITCHED ONLY AT CIRCUIT BREAKER PANEL.
- 3 DIMMER AND FAN SPEED CONTROL SWITCHBANK. REFER TO DETAIL 06/E4.02.
- 4 INDICATES CONTROL FROM SWITCH THIS ROOM (TYPICAL). REFER TO DETAIL 06/E4.02. FANS IN THIS ROOM TO BE PROVIDED WITH WALL-MOUNTED SPEED CONTROL FOR EACH FAN, OVERALL CIRCUIT TO BE RELAY CONTROLLED WITH LOCAL OVERRIDE. PROVIDE A SECOND DIGITAL SWITCH THIS LOCATION TO OVERRIDE THE PRE-PROGRAMMED LIGHTING CONTROL IN COMMONS AREA.
- 5 DIMMER AND FAN CONTROL LOCATION FOR MULTI-PURPOSE ROOM. REFER TO DETAIL 03/E4.01. FANS IN THIS ROOM TO BE PROVIDED WITH WALL-MOUNTED SPEED CONTROL FOR EACH FAN. PROVIDE A DIGITAL SWITCH AT THIS LOCATION TO OVERRIDE THE PRE-PROGRAMMED LIGHTING CONTROL.
- 6 FIXTURE FOR EMERGENCY EGRESS LIGHTING (TYPICAL). SERVE FROM UNSWITCHED PORTION OF THE LIGHTING CIRCUIT SERVING LIGHTING IN THE NEARBY HALL.
- 7 EXIT SIGN (TYPICAL). SERVE FROM UNSWITCHED PORTION OF THE LIGHTING CIRCUIT SERVING THE HALLWAY LIGHTING.
- 8 BALLASTS THIS ROOM TO BE DUAL-SWITCHED WITH ONE 3-WAY ROOM SWITCH CONTROLLING ONE LAMP IN THE FIXTURE AND THE OTHER 3-WAY SWITCH CONTROLLING THE OTHER BALLAST. AT CONTRACTOR'S OPTION, FIXTURES MAY BE TANDEM-WIRED SUCH THAT BALLAST IN ONE FIXTURE CONTROLS THE LAMP IN THE ADJACENT FIXTURE.

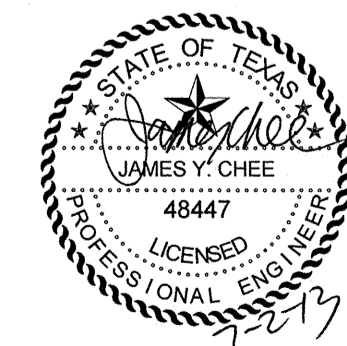
OPTIMUM CARE  
SUGAR LAND, TEXAS



Revision Schedule

| # | Date | Description |
|---|------|-------------|
|   |      |             |

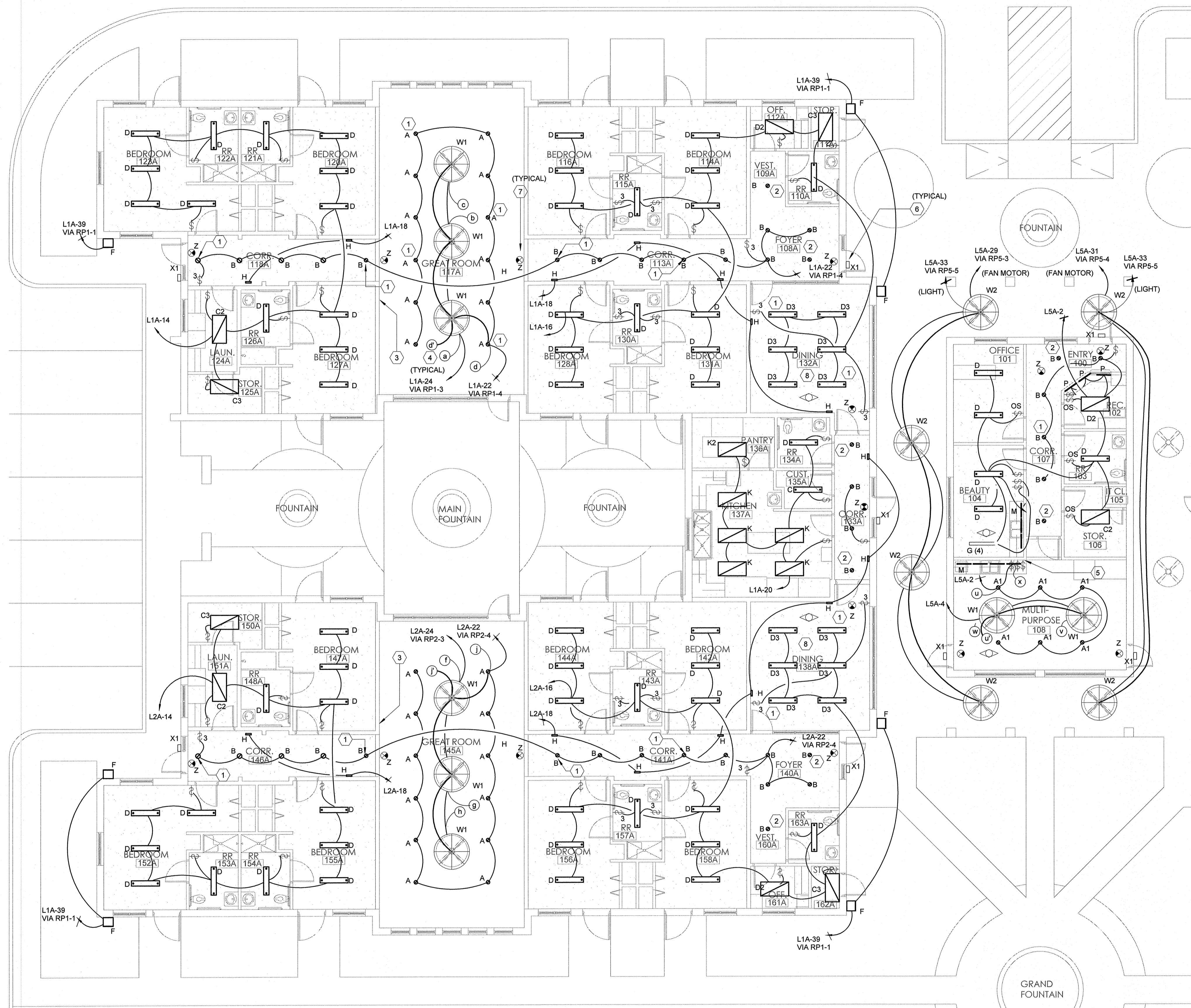
REFER TO ARCHITECTURAL DRAWINGS FOR ADDITIONAL PHASING INFORMATION.



**REDDING LINDEN BARR**  
CONSULTING ENGINEERS  
801 TRAVIS, SUITE 2000  
HOUSTON, TEXAS 77002  
PH: 713.237.9800  
FAX: 713.237.9801  
TEXAS REGISTERED ENGINEERING FIRM F-3113

Project No.  
**ELECTRICAL LIGHTING PLAN - AREA A**  
Sheet No.

**E2.01**



**1 ELECTRICAL LIGHTING PLAN - AREA A**  
1/8" = 1'-0"