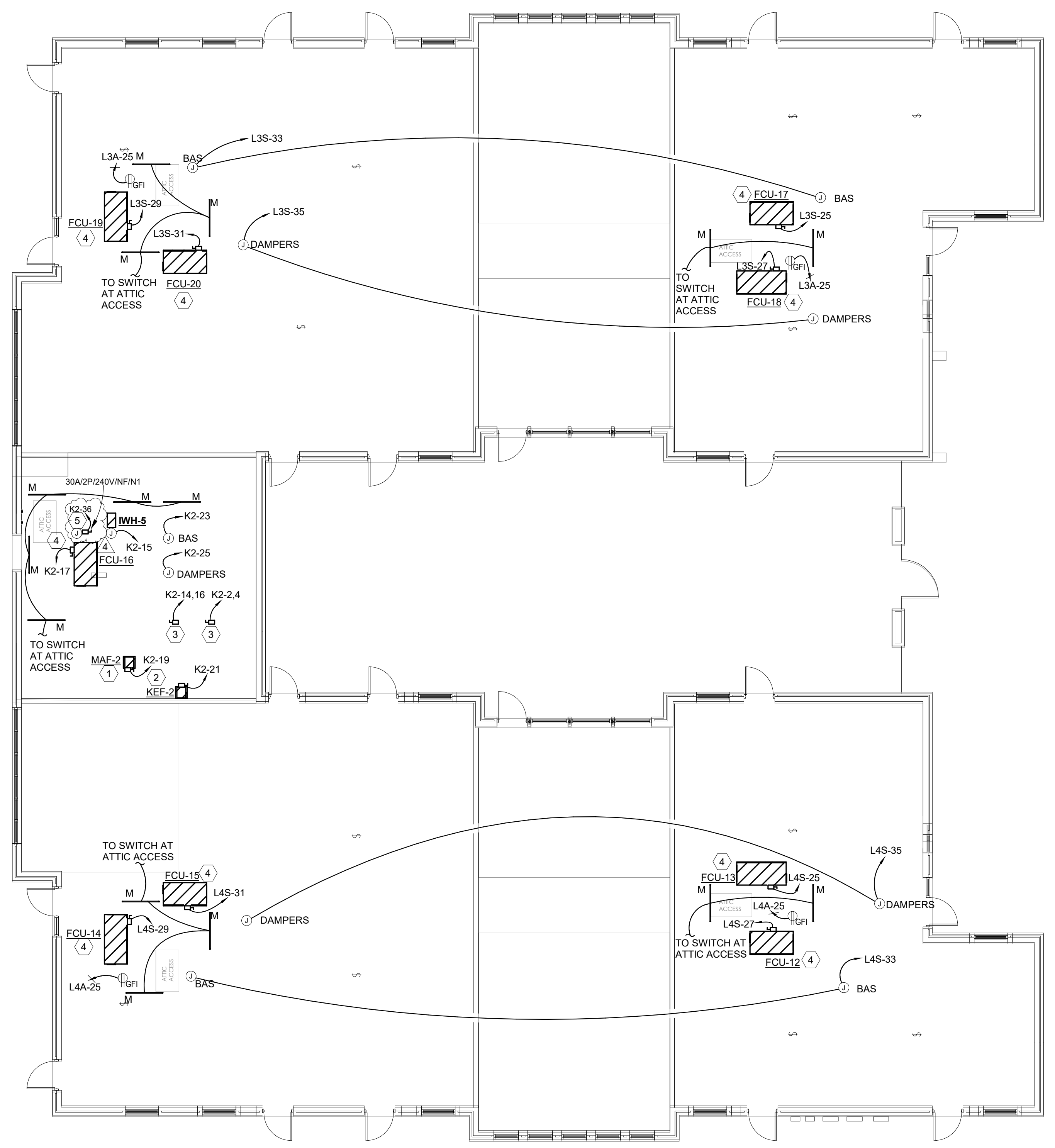


File Name: C:\DMS\Revit_Projects\Optimum Personal Care - Phase 2-ELEC_2-ELEC_nicholas.baekke.rvt
 User: Author
 Date/Time: 10/29/2018 2:46:51 PM



KEYED NOTES

- 1 PROVIDE CONNECTION TO MAKE UP AIR FAN (MAF-2). VERIFY WITH MECHANICAL CONTRACTOR IF DISCONNECT IS PROVIDED, IF NOT REFER TO PANEL SCHEDULE FOR DISCONNECT SIZE.
- 2 PROVIDE CONNECTION TO KITCHEN EXHAUST FAN (KEF-2). VERIFY WITH MECHANICAL CONTRACTOR IF DISCONNECT IS PROVIDED, IF NOT REFER TO PANEL SCHEDULE FOR DISCONNECT SIZE.
- 3 ELECTRICAL CONTRACTOR SHALL COORDINATE AND PROVIDE CONNECTION TO WALK-IN COOLER/FREEZER CONDENSING EQUIPMENT.
- 4 PROVIDE CONNECTION TO FAN COIL UNIT. VERIFY WITH MECHANICAL CONTRACTOR IF DISCONNECT IS PROVIDED, IF NOT REFER TO PANEL SCHEDULE FOR DISCONNECT SIZE.
- 5 POWER FOR MECHANICAL ECONOMIZER. SEE MECHANICAL PLANS FOR EXACT LOCATION.

REFER TO ARCHITECTURAL DRAWINGS FOR ADDITIONAL PHASING INFORMATION.

1 ELECTRICAL POWER AND LIGHTING PLAN - AREA B - MEZZANINE LEVEL
 1/8" = 1'-0"



OPTIMUM CARE
SUGAR LAND, TEXAS



Revision Schedule		
#	Date	Description
3	09-04-15	PERMIT REVISIONS
4	10-26-18	ELECTRICAL REVISION



Project No.
 ELECTRICAL PLAN - AREA B - MEZZ LEVEL

Sheet No.
E1.04

